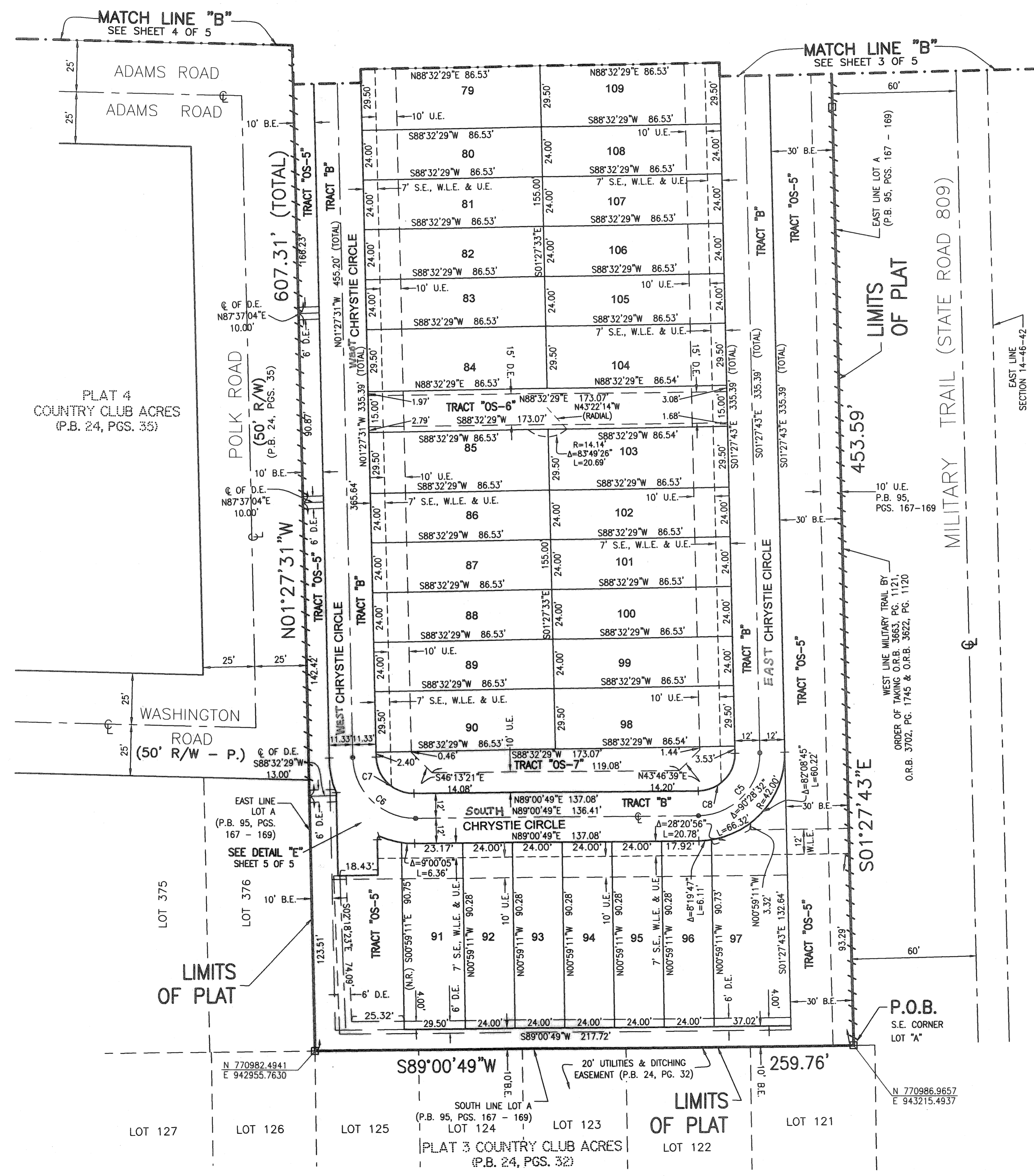
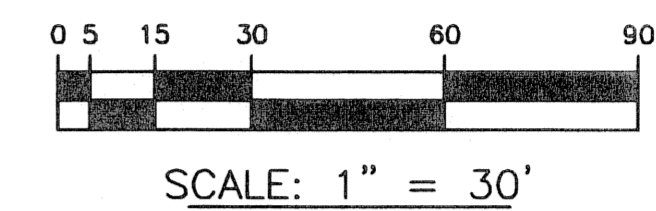


GRAMERCY SQUARE

A PARCEL OF LAND LYING WITHIN THE SOUTHEAST QUARTER (S.E. 1/4) OF SECTION 14, TOWNSHIP 46 SOUTH, RANGE 42 EAST
 AND LYING WITHIN THE NORTHEAST QUARTER (N.E. 1/4) OF SECTION 23, TOWNSHIP 46 SOUTH, RANGE 42 EAST,
 ALSO BEING A REPLAT OF ALL OF MIL-ATLANTIC AS RECORDED IN
 PLAT BOOK 95, PAGES 167 THROUGH 169 OF THE PUBLIC RECORDS OF PALM BEACH COUNTY, FLORIDA,
 AND LYING WITHIN THE CITY OF DELRAY BEACH, PALM BEACH COUNTY, FLORIDA
 SHEET 4 OF 5 SEPTEMBER, 2005

8



LOT AREAS			
LOT NO.	AREA	LOT NO.	AREA
1	4,074 SQ. FT.	56	2,128 SQ. FT.
2	2,234 SQ. FT.	57	2,128 SQ. FT.
3	2,230 SQ. FT.	58	2,128 SQ. FT.
4	2,227 SQ. FT.	59	3,492 SQ. FT.
5	2,610 SQ. FT.	60	3,492 SQ. FT.
6	2,872 SQ. FT.	61	2,128 SQ. FT.
7	2,211 SQ. FT.	62	2,128 SQ. FT.
8	2,207 SQ. FT.	63	2,128 SQ. FT.
9	2,203 SQ. FT.	64	3,492 SQ. FT.
10	3,643 SQ. FT.	65	3,492 SQ. FT.
11	3,163 SQ. FT.	66	2,128 SQ. FT.
12	2,073 SQ. FT.	67	2,128 SQ. FT.
13	2,068 SQ. FT.	68	2,128 SQ. FT.
14	2,068 SQ. FT.	69	2,128 SQ. FT.
15	2,068 SQ. FT.	70	2,128 SQ. FT.
16	2,068 SQ. FT.	71	2,615 SQ. FT.
17	3,179 SQ. FT.	72	3,135 SQ. FT.
18	3,775 SQ. FT.	73	2,068 SQ. FT.
19	2,220 SQ. FT.	74	2,068 SQ. FT.
20	2,220 SQ. FT.	75	2,068 SQ. FT.
21	2,220 SQ. FT.	76	2,068 SQ. FT.
22	2,728 SQ. FT.	77	2,068 SQ. FT.
23	2,728 SQ. FT.	78	2,544 SQ. FT.
24	2,220 SQ. FT.	79	2,553 SQ. FT.
25	2,220 SQ. FT.	80	2,077 SQ. FT.
26	2,220 SQ. FT.	81	2,077 SQ. FT.
27	3,790 SQ. FT.	82	2,077 SQ. FT.
28	3,653 SQ. FT.	83	2,077 SQ. FT.
29	2,186 SQ. FT.	84	2,553 SQ. FT.
30	2,186 SQ. FT.	85	2,553 SQ. FT.
31	2,186 SQ. FT.	86	2,077 SQ. FT.
32	2,687 SQ. FT.	87	2,077 SQ. FT.
33	2,687 SQ. FT.	88	2,077 SQ. FT.
34	2,186 SQ. FT.	89	2,077 SQ. FT.
35	2,186 SQ. FT.	90	2,553 SQ. FT.
36	2,186 SQ. FT.	91	2,665 SQ. FT.
37	3,595 SQ. FT.	92	2,167 SQ. FT.
38	3,179 SQ. FT.	93	2,167 SQ. FT.
39	2,068 SQ. FT.	94	2,167 SQ. FT.
40	2,068 SQ. FT.	95	2,167 SQ. FT.
41	2,068 SQ. FT.	96	2,168 SQ. FT.
42	3,371 SQ. FT.	97	3,693 SQ. FT.
43	3,543 SQ. FT.	98	2,553 SQ. FT.
44	2,186 SQ. FT.	99	2,077 SQ. FT.
45	2,186 SQ. FT.	100	2,077 SQ. FT.
46	2,186 SQ. FT.	101	2,077 SQ. FT.
47	2,687 SQ. FT.	102	2,077 SQ. FT.
48	2,687 SQ. FT.	103	2,553 SQ. FT.
49	2,186 SQ. FT.	104	2,553 SQ. FT.
50	2,186 SQ. FT.	105	2,077 SQ. FT.
51	2,186 SQ. FT.	106	2,077 SQ. FT.
52	3,558 SQ. FT.	107	2,077 SQ. FT.
53	2,643 SQ. FT.	108	2,077 SQ. FT.
54	2,128 SQ. FT.	109	2,553 SQ. FT.
55	2,128 SQ. FT.		

OPEN SPACE TRACTS	
TRACT	AREA
OS-1	46,129 SQ. FT.
OS-2	3,600 SQ. FT.
OS-3	3,627 SQ. FT.
OS-4	3,437 SQ. FT.
OS-5	30,127 SQ. FT.
OS-6	3,420 SQ. FT.
OS-7	3,487 SQ. FT.
OS-8	7,447 SQ. FT.
OS-9	4,548 SQ. FT.

R/W TRACTS	
TRACT	AREA
A	69,309 SQ. FT.
B	29,633 SQ. FT.
C	40,430 SQ. FT.

REC. TRACT	
TRACT	AREA
R-1	5,646 SQ. FT.
R-2	16,715 SQ. FT.

LAKE TRACT	
TRACT	AREA
L-1	58,753 SQ. FT.

THIS INSTRUMENT PREPARED BY
 WILBUR F. DIVINE, P.S.M. 4190, STATE OF FLORIDA
 LAWSON, NOBLE AND WEBB, INC.
 ENGINEERS PLANNERS SURVEYORS
 420 COLUMBIA DRIVE, SUITE 110
 WEST PALM BEACH, FLORIDA 33409
 LB6674

- LEGEND:**
- = SET PERMANENT REFERENCE MONUMENT, L.B. #6674
 - = FOUND PERMANENT REFERENCE MONUMENT, L.B. #353
 - = SET PERMANENT CONTROL POINT, L.B. #6674
 - ⊙ = BUFFER EASEMENT
 - ⊕ = BELL SOUTH TELECOMMUNICATIONS EASEMENT
 - ⊖ = CENTERLINE
 - ⊗ = DRAINAGE EASEMENT
 - ⊘ = FOUND
 - ⊙ = FLORIDA POWER & LIGHT COMPANY
 - ⊚ = ARC LENGTH
 - ⊛ = LAKE MAINTENANCE EASEMENT
 - ⊜ = LIFT STATION EASEMENT
 - ⊝ = NOT TO SCALE
 - ⊞ = OFFICIAL RECORD BOOK
 - ⊟ = POINT OF BEGINNING
 - (P) = PLAT
 - P.B. = PLAT BOOK
 - PG. = PAGE
 - P.R.M. = PERMANENT REFERENCE MONUMENT
 - R/W = RIGHT-OF-WAY
 - R = RADIUS
 - SEC. = SECTION
 - S.L.E. = SEWER LINE EASEMENT
 - S.E. = SIDEWALK EASEMENT
 - U.E. = GENERAL UTILITY EASEMENT
 - W.L.E. = WATER LINE EASEMENT
 - Δ = DELTA ANGLE
 - ⊘⊘ = NON-VEHICULAR ACCESS LINE PER PLAT

CURVE TABLE					
C1	R=30.00'	Δ=89°19'04"	L=46.77'	CH=42.17'	CB=S44°16'45"W
C2	R=30.00'	Δ=91°03'16"	L=47.68'	CH=42.82'	CB=N45°32'05"W
C3	R=30.00'	Δ=90°00'00"	L=47.12'	CH=42.43'	CB=N44°59'33"E
C4	R=30.00'	Δ=89°31'28"	L=46.87'	CH=42.25'	CB=N46°13'27"W
C5	R=30.00'	Δ=90°28'32"	L=47.37'	CH=42.60'	CB=N43°46'33"E
C6	R=30.00'	Δ=89°31'40"	L=46.88'	CH=42.25'	CB=S46°13'21"E
C7	R=18.00'	Δ=89°31'40"	L=28.13'	N/A	N/A
C8	R=18.00'	Δ=90°28'32"	L=28.42'	N/A	N/A

C - CURVE
 R - RADIUS
 Δ - CENTRAL ANGLE
 L - LENGTH OF ARC
 CH - CHORD DISTANCE
 CB - CHORD BEARING
 N/A - NOT APPLICABLE

